

TAKACAT®

LX-R Series

Owners Manual

Models T260LX-R to T460LX-R



INTRODUCTION

Congratulations on the purchase of your new Takacat LX-R!

This information sheet is to assist with the assembly, operation and storage of your inflatable boat with safety and enjoyment in mind.

- International Standards ISO 4892-3:2006
- Built to International Standard ISO/6185
- CE tested to 2013/53/EU

PARTS & ACCESSORIES LIST

- Inflatable tubes
- Inflatable seat
- Manual pump and gauge
- Repair patches x 2
- Valve Spanner
- Oars x 2
- Transom engine mounting plate
- Rubber Bung

SAFETY CONSIDERATIONS

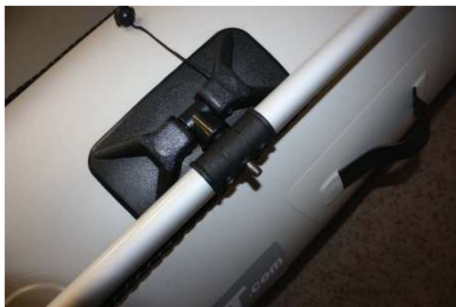
- Always wear an approved life jacket when operating this boat
- Never allow the boat to come into contact with sharp objects, corrosive or caustic chemicals or open flames
- Never operate this boat while under the influence of alcohol or drugs.
- Never operate this boat unless proficient in the safe operation of inflatable boats
- Never allow a minor to operate this boat

ASSEMBLY INSTRUCTIONS

1. Unwrap your new Takacat LX-R on a clean smooth surface. Take care when using a knife to not damage the tubes inside the packaging.
2. Locate the inflator valve on the tubes and inflate to 3 psi with the included hand pump or optional electric E-Pump. Make sure the little nipple in the middle is closed in the up position.



3. Inflate the Inflatable Seat. The seat can be inflated to a pressure that is most comfortable. The seat is designed for comfortable rowing and can also be used as a throwable flotation device if needed. It can be tied into place or fitted with a couple of D-Shackles.
4. Assemble each oar and install using a little Vaseline or Marine Grease on the thread for easy removal and to ensure they don't seize. Be sure to attach retaining nut to prevent losing oars when in use.



5. If you're using a portable outboard fit the plastic transom plate to the rear of the transom in the centre. This will give your portable outboard some grip on the back of the transom.
6. Fit the rubber hull drain bung on the inside of the transom. If you need to drain the deck in the water it is best to do this when your under power by removing the bung until drained then refitting.
7. Install your outboard engine.

Please note: that all Takacat models are designed to be use with a Short Shaft (15" shaft) outboard only.

8. After launching your boat into the water, check the pressure in the hulls to verify you still have 3 psi hull air pressure. If the water is cooler than the air temperature, the air inside the hulls will condense causing a pressure drop. Use the manual pump to inflate back to 3 psi hull pressure if needed. You should check the pressure in your floor and tubes daily!

Well Done – now you are set up with your new Takacat!

USING THE 12v E-PUMP

Please be aware that once it hits 1 psi +/- it will switch over to compressor mode. The pump will begin to make a louder noise (it's not broken), but it is still working and will continue until the correct psi has been reached. Please do not switch it off at this point.

CLEANING INSTRUCTIONS

Rinse your boat with clean fresh water whenever possible after each use.

At the end of each season it is recommended you clean it with Takacat Boat Cleaner which has a UV Protectant formulated into it. Periodic washing can be completed with Takacat Boat Wash or soapy water and fully rinse after. We recommend a non-caustic dish soap.

Important – DO NOT use a vinyl preserving agent on fabric surfaces. Chemicals in such agents will dry out the fabric and this will void any warranty.

REPAIR INSTRUCTIONS

Glue/ repairs (the patch kit does not come with glue)

If you get a pin hole leak a very quick and effective way to fix it is a simple drop or two of common **Super Glue / Elephant Glue** over the hole when the floor is deflated (no patch required). This is a very fine glue and will seep into the hole. It then dries in roughly 60 seconds and you will be good to inflate and go again 10 minutes later. A glue called Aquaseal available from most dive shops can also be used just with a slower drying time (2hrs or so). If you have a larger cut then this is where a patch is required and the best contact adhesive glue is called **Bostic 999**.

TOWING / ANCHORING / MOORING

Any Takacat Inflatable must be empty when it is towed by another boat. The towing line should be connected to the tow eye under the front bow section. The inflatable must be under constant supervision when it is being towed.

Anchoring and mooring line should be secured to the same eye.

ROWING

Takacat inflatable catamarans are supplied with 2 oars and rowlocks. Please make sure the seat is properly inflated and installed prior to use.

Install the oars in oar lock pins, attach oar lock pin cap screws prior to use.

NOTE: Do not use oars as leavers as they will break.

MOTORING

WARNING: DO NOT OVERPOWER AND EXCEED THE MAXIMUM RECOMMENDED OUTBOARD WEIGHT / POWER LIMITATIONS

Overpowering can result in severe handling and/or stability problems with serious consequences.

When the boat is being powered, passengers should hold onto the lifeline in order to avoid falling overboard. When operating the motor-powered boat, sit on one of the hulls. Rapid acceleration should be avoided to prevent falling overboard backwards.

Regular check should be made on the motor attachment screws/lugs. Loose screws will cause erratic boat operation and possible the loss of your outboard motor!

Onboard, check that the loads are not chafing or puncturing the boat skin.

BEACHING

Remember to lift the motor shaft when coming into the beach otherwise you can cause significant damage to your motor.

Do not drag the Takacat inflatable boat across rocks, sand, gravel or on pavement as damage may occur to the boat skin.

If the boat is temporarily left on a beach part of the boat should be left in the water so that the internal heat caused by exposure to unlight can escape and so that air pressure in the tubes can decrease.

Please note – Takacat Australia Ltd does not take responsibility for any misuse of this inflatable catamaran. Please always remember others around you and those onboard and be a responsible skipper.

LX-R SPECIFICATIONS

	T260LX-R	T300LX-R	T340LX-R	T380LX-R	T420LX-R	T460LX-R
Overall Length	2.6m	3.0m	3.4m	3.8m	4.2m	4.6m
Width	1.66m	1.66m	1.66m	1.66m	1.95m	1.95m
Height	480mm	480mm	480mm	480mm	550mm	550mm
Boat Weight	61kg	68kg	75kg	82kg	90kg	102kg
Hull Size	2.0m x 0.7m	2.4m x 0.7m	2.8m x 0.7m	3.2m x 0.7m	2.8m x 0.85	3.2m x 0.85
Air Chambers	4	4	4	4	4	4
Rod Holders	4	4	4	4	6	6
Max HP	10hp	15hp	20hp	25hp	40hp	50hp
Max Outboard Weight Limit	45kg	50kg	55kg	65kg	80kg	100kg
Anchor Hatch Size	0.85m X 0.5m	0.85m X 0.5m	0.85m X 0.5m	0.85m X 0.5m	1m X 0.8m	1m X 0.8m
Fabric	1.2mm TPU	1.2mm TPU	1.2mm TPU	1.2mm TPU	1.2mm TPU	1.2mm TPU
Load Capacity (pax / kg)	3 (360kg)	4 (367kg)	5 (544kg)	6 (640kg)	7 (730kg)	8 (838kg)

Specifications subject to change without notice. All dimensions and weight measurements indicated have a tolerance of plus/minus 2% and 8% respectively. Built to International Standard ISO/6185

For any warranty or technical issues, please see:

www.takacat.com.au

or Email Takacat Australia:

sales@takacat.com.au